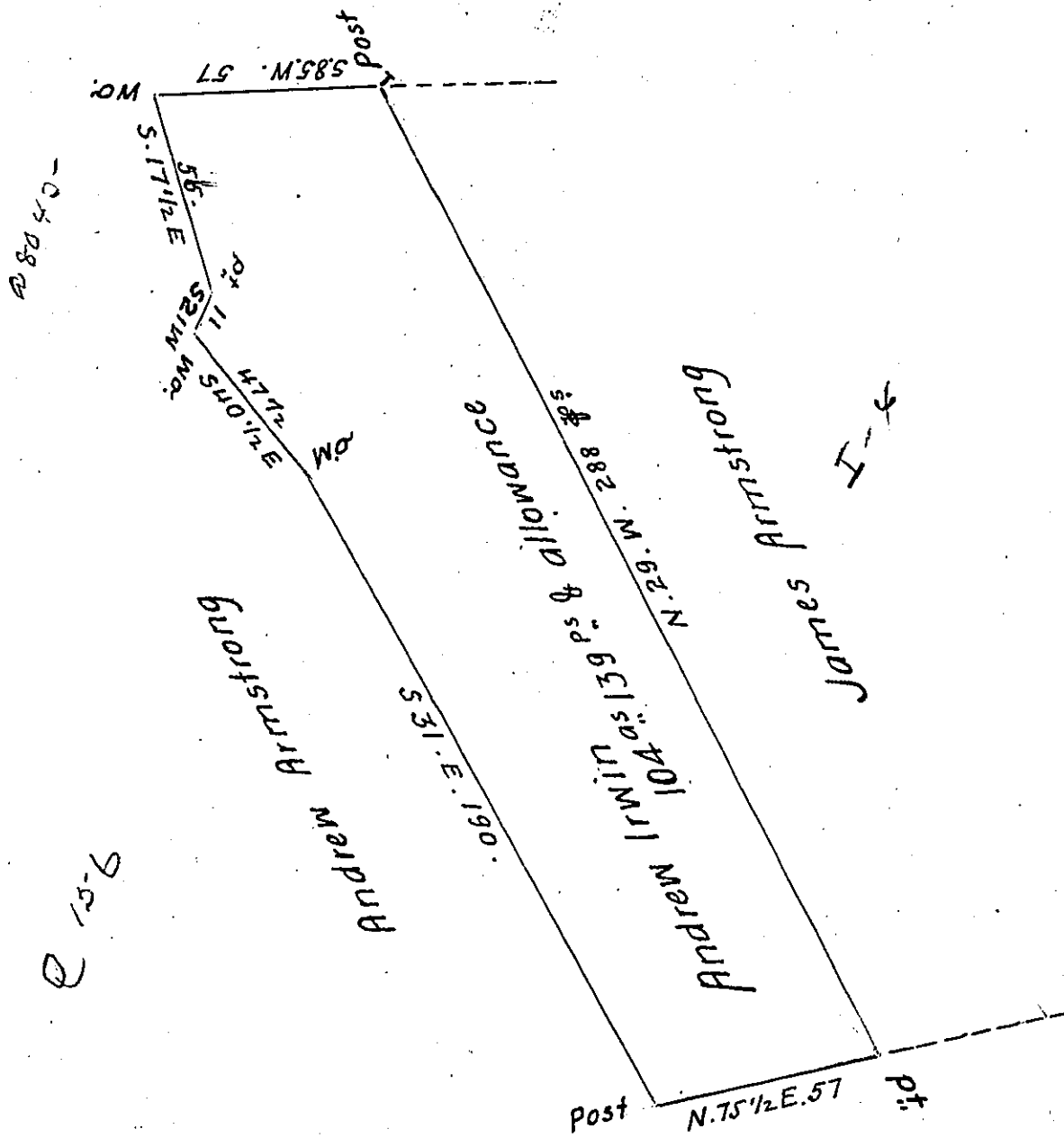


William Gitston  
156  
155



Jeremiah Rees  
B-13-7

A Draught of a Tract of Land situate in East pennsborough Town-  
-ship Cumberland County Containing 104<sup>as</sup> 139 Ps and allowance of six  
# Cent for Roads &c. Surveyed the first Day of April 1793. In pursuance of  
a Warrant granted to Andrew Irwin Dated the 5<sup>th</sup> Day of May 1788.

I Certify that the above is a Copy of a Draught Remaining in the Deputy  
Surveyors office Sur<sup>d</sup> by Samuel Lyon (then) D.S. of Cumberland  
County, June 14<sup>th</sup> 1810.

To Andrew Porter Esq. S.G.

W<sup>m</sup> Wheeler D.S.

IN TESTIMONY that the above is a copy of the original remaining on file in  
the Department of Internal Affairs of Pennsylvania, made  
conformably to an Act of Assembly approved the 16th day of  
February, 1833, I have hereunto set my Hand and caused  
the Seal of said Department to be affixed at Harrisburg,  
this third day of July 1905

*Loac R. Brown*  
Secretary of Internal Affairs.